



# FLOW METERING



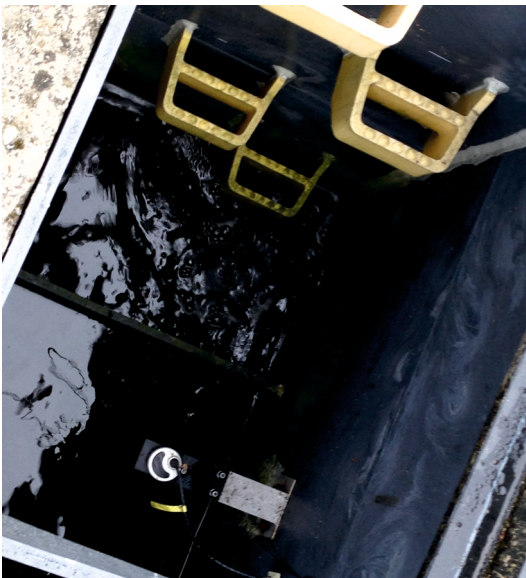
# FLOW METERING

## 1. Product

Metering the quantity of waste water released to sewage pipeline system is performed by a technically appropriate calibrated flow meter. Certified flow meters for measurement of wastewater and sludge quantity are used:

- ▶ in treatment process
- ▶ to measure raw wastewater at the inflow
- ▶ to measure treated wastewater at the outflow

Flow metering on free water level – Parshall flume, Venturi flume, Thomson overflow.



Measuring flumes



## Application

- ▶ in open flume
- ▶ in pipelines – flow meter
- ▶ volumetric
- ▶ drinking
- ▶ sewage and industrial
- ▶ surface and rain water
- ▶ chemical and highly contaminated water
- ▶ with foam on the water level

## 2. Principle

1. Specific profile and sensor unit cable-connected to evaluation unit:

- ▶ instant flow /  $\text{l.s}^{-1}$  /
- ▶ daily flow  $Q_{24}$  /  $\text{m}^3.\text{d}^{-1}$  /
- ▶ total quantity of water since start of a month
- ▶ total quantity of water since start of a year
- ▶ water level line metering
- ▶ memory: cca 3 000 records
- ▶ 256 BYTE for statistics

2. Manual data reading, transmission, back up

## 3. Advantages

- ▶ The flowmeter is a type device according to the Metrology Act No. 142/2000 Coll.
- ▶ Categorized as specified billing meters.

## 4. Type range

- ▶ type range is not limited
- ▶ meter design is based on:
  1. Required measured flow
  2. Convenient system

## 5. Warranty

- ▶ warranty period 2 years

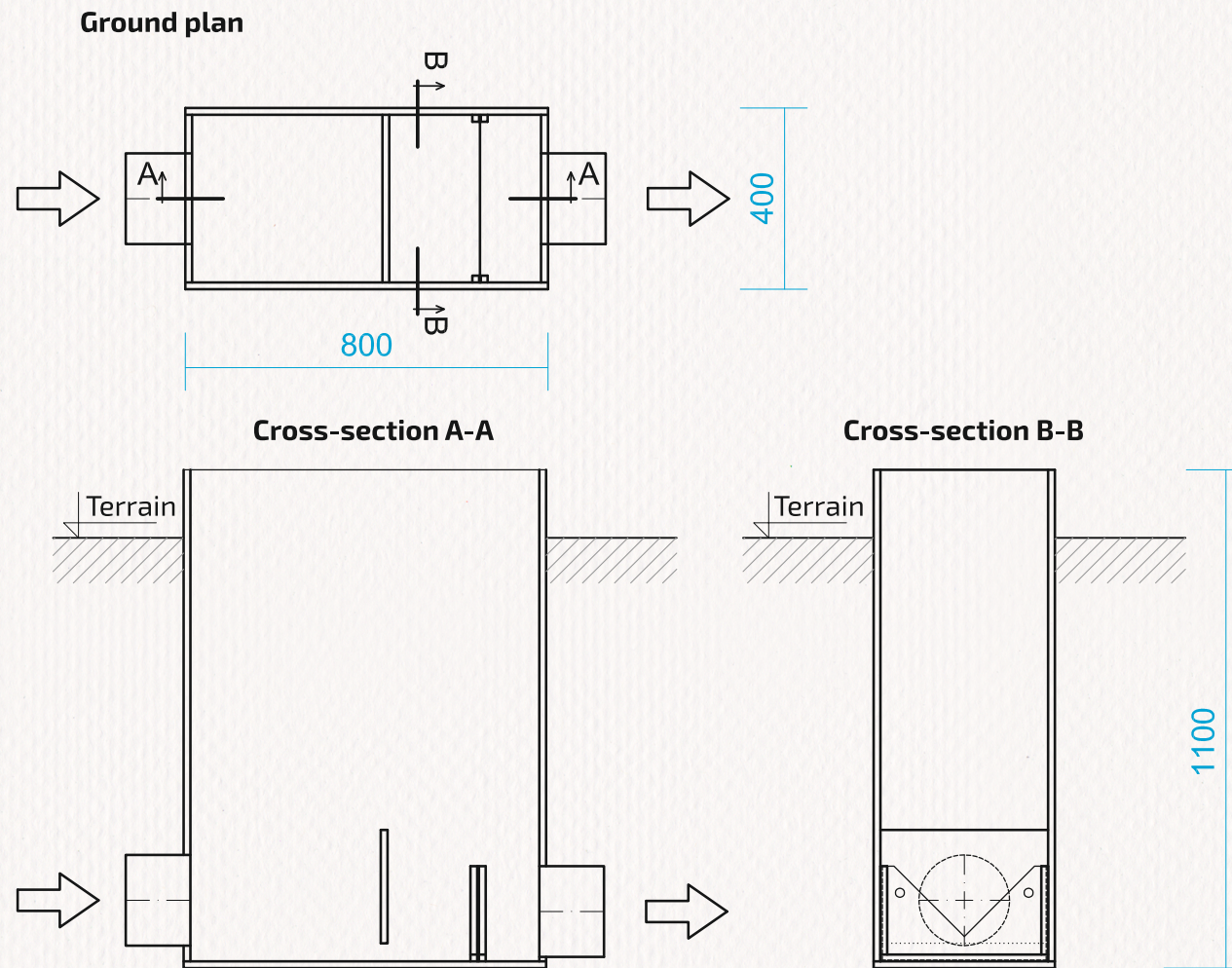
## 6. Service

- ▶ warranty and after-warranty service within 24 hours, max. to 48 hours (including weekends and holidays) since failure recording
- ▶ upon the contract or upon request
- ▶ technical repairs of the meter, sensor and evaluation unit
- ▶ renewal of calibration

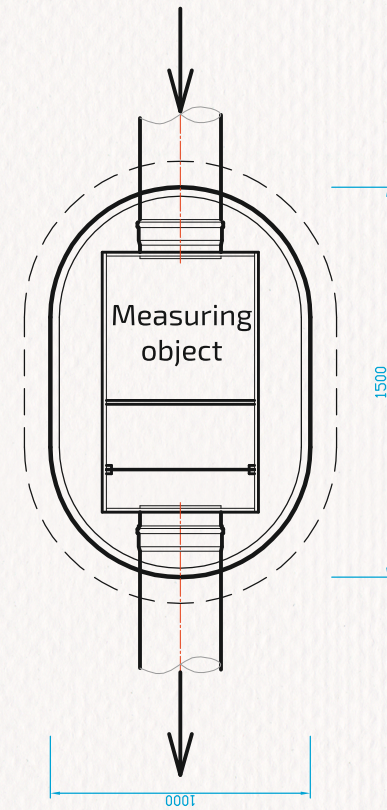
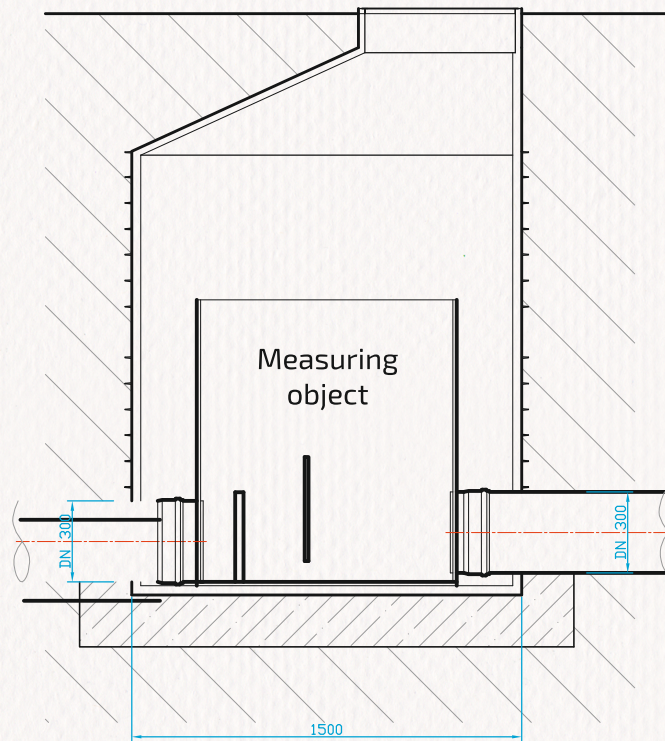
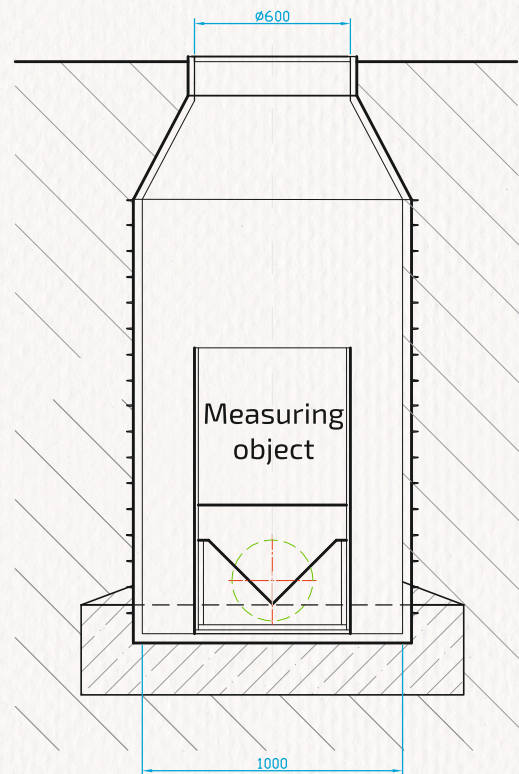


## Measurement in the pipeline



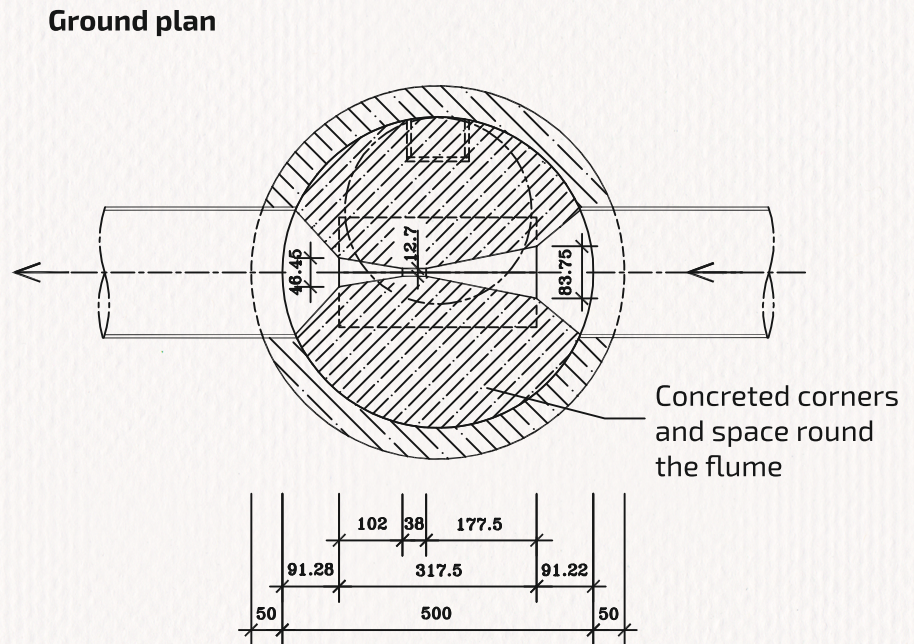
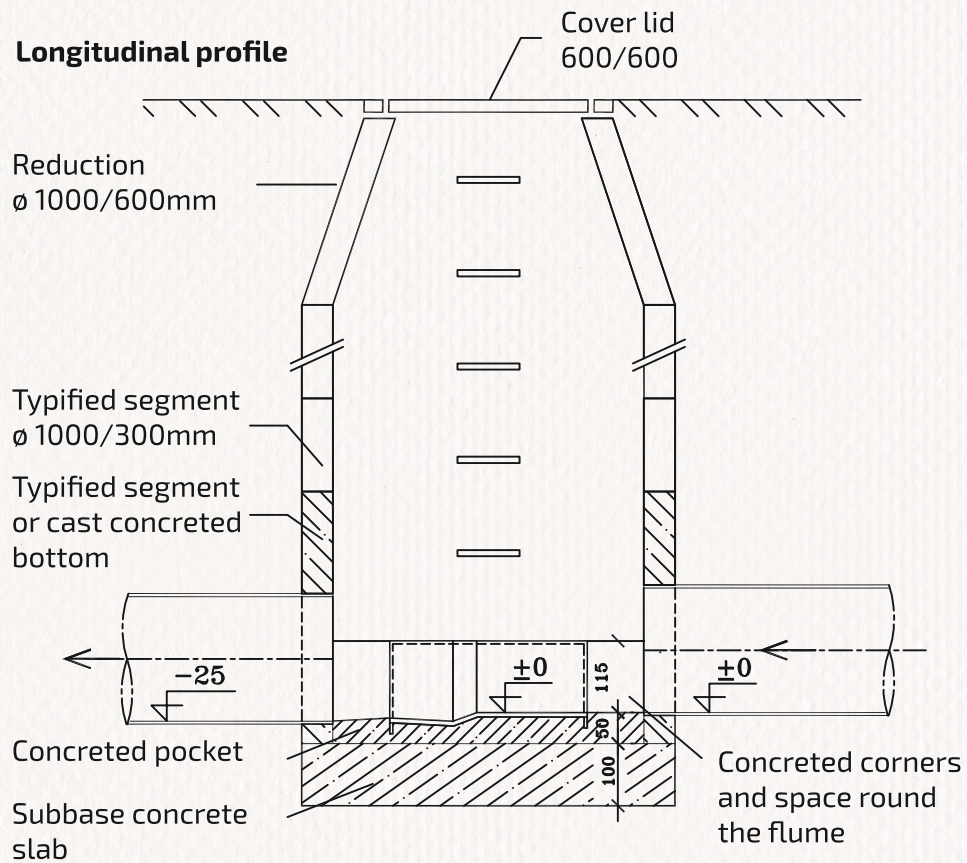






Measuring object inside shaft – example





**Remark: accurate height position of the Parshall flume inside the shaft to result from hydraulic calculation**





Metering in the pipeline



Concreted Parshall flume





Flow metering





Plastic Parshall flume



# **PURE WATER**

## **FOR THE MANKIND**





EKOSERVIS SLOVENSKO, s.r.o.  
Stredná 126, 059 91 Veľký Slavkov, SLOVAKIA  
Office + 421 52 788 03 11  
Sales + 421 905 202 502  
Technology service + 421 905 960 431  
E-mail: [ekoservis@ekoservis.sk](mailto:ekoservis@ekoservis.sk)  
FB: [www.facebook.com/cistenievod](https://www.facebook.com/cistenievod)  
[www.ekoservis.sk](http://www.ekoservis.sk)

